

PRODUCT SHEET / 2018 04 10

Sabine

Acoustic workplace / Storage

Design: Bertil Harström / Johan Kauppi



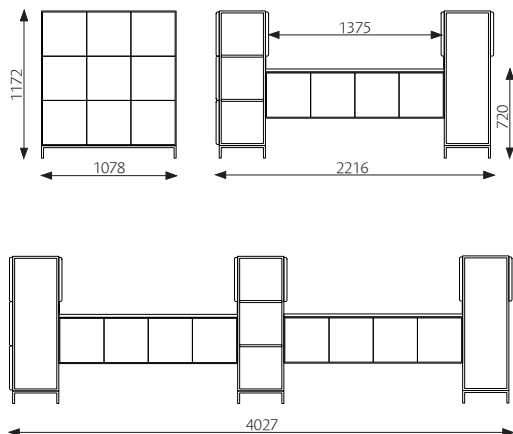
Sabine

Acoustic workplace / Storage

Design: Bertil Harström / Johan Kauppi

Sabine acoustics workplace is a unique product for modern work situations. The table top in white stained ash rests on a sound absorbing technique beam connected by storage units. The workplaces can be connected in series. Socket for power, data, USB and HDMI at every workstation. The sides can be fitted with coat racks or shelves.

DIMENSIONS



Model: 2-4 workplaces

Width x Height: 2216 x 1172 mm

Depth: 1122 mm

Weight / Volume: 147 kg / 1,2 m³

Felt area: 3,96 m²

Model: 4-8 workplaces

Width x Height: 4027 x 1172 mm

Depth: 1122 mm

Weight / Volume: 241 kg / 1,9 m³

Felt area: 5,70 m²

Table top: 1424 x 1065 x 22 mm

Table height: 720 mm

Shelf division: 352 mm

DESCRIPTION

Group workplaces with acoustics storage.

Body: 16 mm white painted MDF board (Nordic Ecolabel) or lacquered Valchromat (coloured throughout MDF) in black or grey. The body is assembled with glued pins to avoid visible fittings. The sides and back are perforated.

Sound absorbing material: The perforations are from the outside covered with molded felt panels 352 x 352 x 3 mm with polyether filling of 20 mm.

Fixed table top: 22 mm MDF board (Nordic Ecolabel) with white stained ash veneer and veneered edges.

Technique beam: Under the work top runs a technique beam for hiding of cables, etc. Also this is provided with sound absorbers.

Power and data: Each workstation is equipped with two outlets for power, data and USB. Multiple units can be connected in series.

Metal frame: Powder coated in white, grey or black, height 100 mm.

Wooden legs: White stained solid ash, Ø40 with adjustable foot x 100 mm.

Castors: Italian aluminum, height 100 mm. Not lockable. 100% recyclable materials.

The furniture are delivered subassembled (storage, beam and work top).

Sabine

Acoustic workplace / Storage

Design: Bertil Harström / Johan Kauppi

OPTIONS

Body: MDF or Valchromat

MDF white



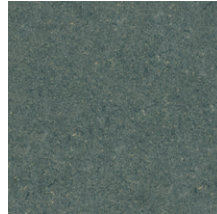
NCS S 0500-N

Valchromat black



NCS S 8500-N

Valchromat grey



NCS S 6502-Y

Acoustic felt:

White



NCS S 0500-N

Anthracite



NCS S 8500-N

Grey



NCS S 5500-N

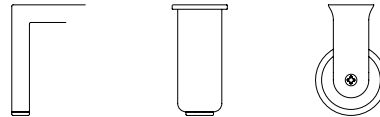
OPTIONS CONT.

Table top:

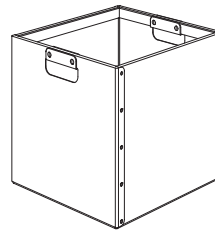
White stained ash



Foot: Metal frame in NCS S 0500-N White, NCS S 8500-N Black or RAL 9006 Grey, wooden legs and castors.



Storage box: Swedish-made box in recycled cardboard with frame and runners in wood. For more details, see separate product sheet.



NCS codes indicates nearby shade. Photographed samples are displayed as a guide and colour variations may occur.

We advise you request actual samples before ordering.

Sabine

Acoustic workplace / Storage

Design: Bertil Harström / Johan Kauppi

CERTIFICATE

Acoustics: Measurements made in accordance with ISO 354:2003. Evaluation made according to standards for individual objects SS 25269:2013 (Report 14-180-R1, Date 2014-12-12, Report Sabine empty 14-180-M1, Date 2014-12-11, Report Sabine 40 % binders 14-180-M2, Date 2014-12-11, Akustikverkstan)

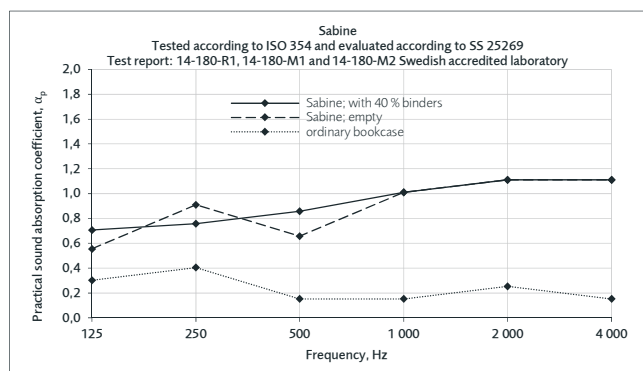
Möbelfakta: The product meets the requirements for quality, environment and social responsibility defined by Möbelfakta. Measurements made in accordance with EN 16212:2012. (Report 6FOD6305A and 6FOD6305B, Date 2016-03-22, SP)

Glimakra of Sweden AB is certified according to ISO 9001:2015 and ISO 14001:2015.



SPECIFICATION TEXT

E.g: Sabine acoustic workplace 2-4 seatings. Body in black Valchromat with wooden legs in white stained solid ash, table top in white stained ash veneer and felt anthracite. Perforated body covered with molded felt panels for reduced sound propagation. Acoustics evaluated according to SS 25269.



Equivalent absorption area per m² felt (m²S/m²).

The values are to be multiplied by the storage furniture felt area.

Sabine

Acoustic workplace / Storage

Design: Bertil Harström / Johan Kauppi

