

PRODUCT SHEET / 2020 12 11

# Wakufuru

Table and bench

Design: Johan Kauppi



# Wakufuru

Table and bench

Design: Johan Kauppi

A system of tables and benches which bring together sound absorption and solid wood in an innovative way. The unique corner construction of the furniture creates a consistent system where all table and bench units are constructed in exactly the same way, regardless of size or height. Hidden under each furniture is an effective sound absorption, structured in several layers.

## DIMENSIONS

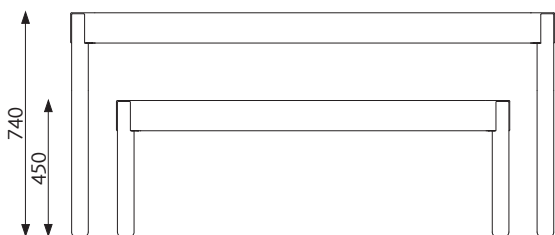


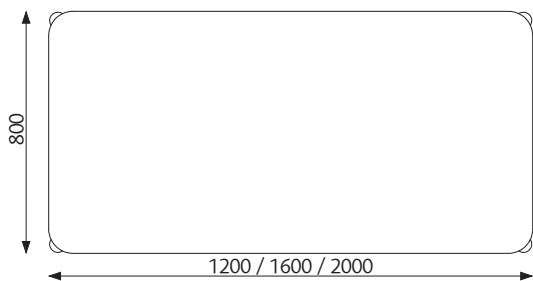
Table:

Length: 1200 / 1600 / 2000 mm

Width: 800 mm

Height: 740 mm

Weight: 25 / 34 / 42 kg



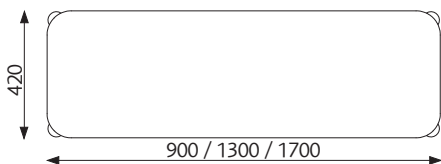
Bench:

Length: 900 / 1300 / 1700 mm

Width: 420 mm

Height: 450 mm

Weight: 13 / 19 / 25 kg



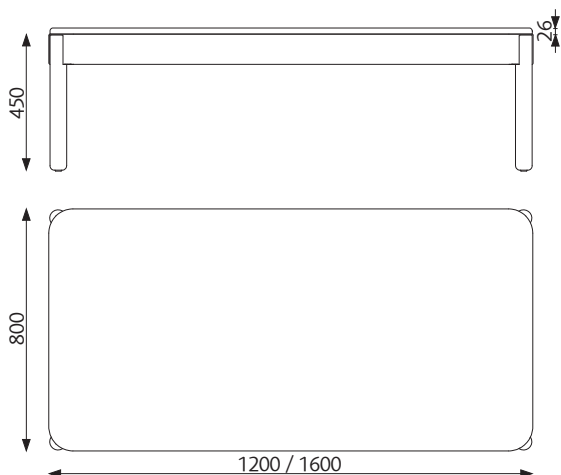
Side table:

Length: 800 mm

Width: 500 mm

Height: 450 mm

Weight: 14 kg



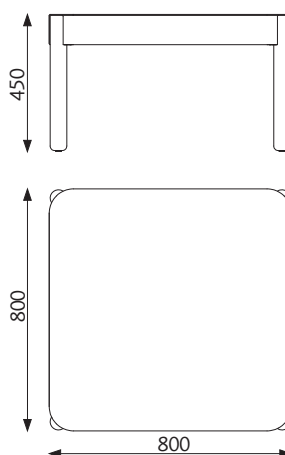
Bench:

Length: 1200 / 1600 mm

Width: 800 mm

Height: 450 mm

Weight: 24 / 33 kg



Side table:

Length: 800 mm

Width: 800 mm

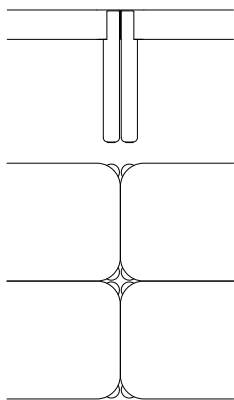
Height: 450 mm

Weight: 17 kg

# Wakufuru

Table and bench

Design: Johan Kauppi



The furniture are suitable for repetition.



Acoustic solution and construction.

## DESCRIPTION

Rounded tables and benches in ash with massive frame recessed into round wooden legs. Top in veneered MDF. Underneath a hidden acoustic filling consisting of felt, perforated board, foam and air gap for the best possible sound absorption. The product is coated with water-based varnish. The units can be linked to each other when larger units is needed.

Legs and acoustic filling is mounted after delivery.

Varnish: Water-based varnish. Surface coating meets the requirements defined by Möbelfakta.

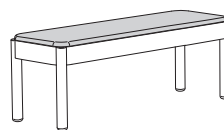
Frame: 100 x 20 mm solid ash with rounded corners with radius 80 mm.

Legs: Solid ash Ø55 mm with recess for rounded frame.

Top shelf: 16 mm MDF with ash veneer.

Acoustic filling: formfelt 2.8 mm glued to 3 mm perforated board with 20 mm polyether. Mounted with 10 mm air gap.

## OPTIONS



Seat cushion: Wakufuru bench can be fitted with upholstered seat cushion 26 mm with anti-slip mat.

# Wakufuru

Table and bench

Design: Johan Kauppi

## CERTIFICATE

Acoustics: Measurements made in accordance with ISO 354:2003. Evaluation made according to standards for individual objects SS 25269:2013

(Report 16-213-M17, Date 2016-09-30, Akustikverkstan, laboratory accredited by Swedac)

$N_{10}=7.1$

Möbelfakta: This product has been declared and approved according to the criteria of Möbelfakta ver. 2019-05-01. Reg. number 0120201211. Validity: until 2025-12-11.

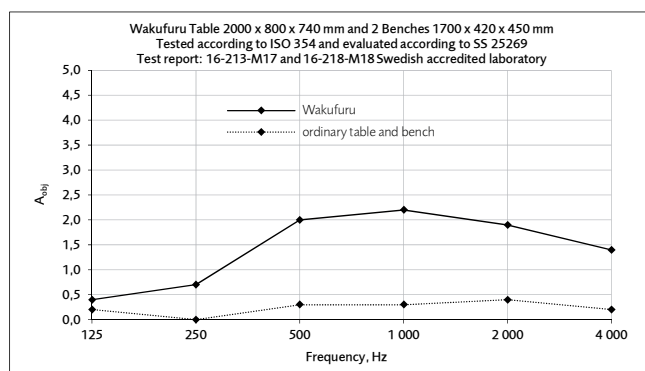
Glimakra of Sweden AB is certified according to ISO 9001:2015 and ISO 14001:2015.

## SPECIFICATION TEXT

E.g: 1 pc Wakufuru Table 2000 x 800 x 740 mm with sound absorbing filling. Frame and legs in solid ash and top in ash veneer. Rounded corners.

2 pcs Wakufuru Bench 1700 x 420 x 450 mm with sound absorbing filling. Frame and legs in solid ash and top in ash veneer. Rounded corners.

Seat cushion 26 mm with anti-slip mat, Blazer CUZ28.



Equivalent absorption area per object (m²S/object)



Acoustic tested product, see chart to the left.

# Wakufuru

Table and bench

Design: Johan Kauppi



# Wakufuru

Table and bench

Design: Johan Kauppi

