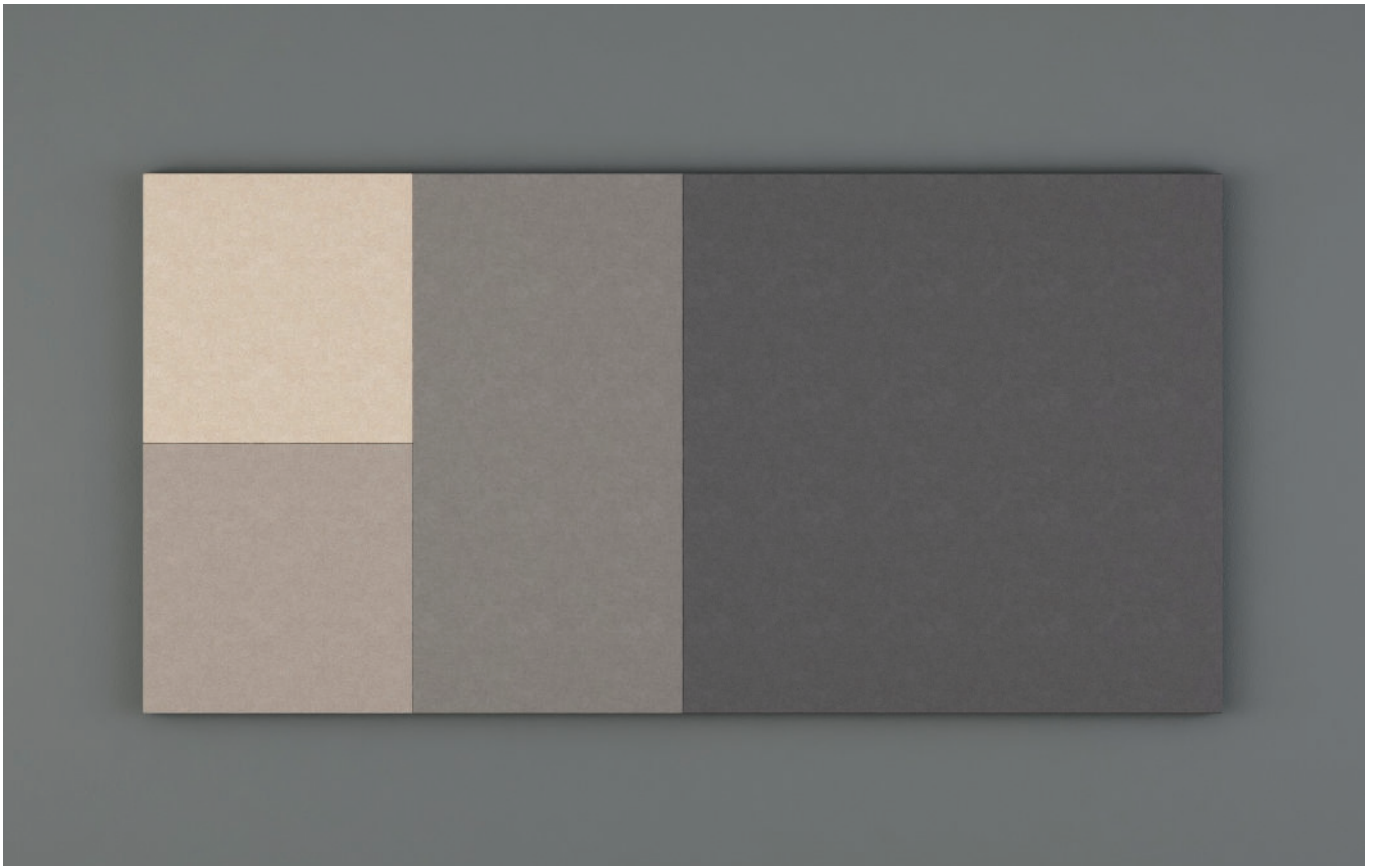


PRODUCT SHEET / 2021 08 12

# LimbusWall

Wall absorbent

Design: Team Glimakra



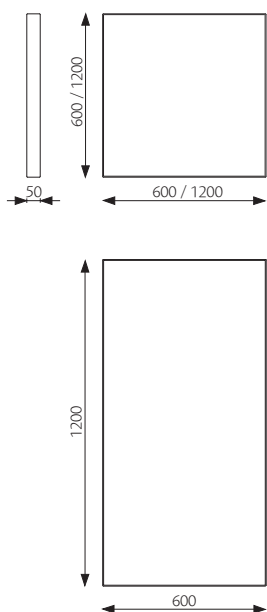
# LimbusWall

Wall absorbent

Design: Team Glimakra

LimbusWall is a high-absorbing wall absorbent that has got its character from LimbusDeskup screen with its straight lines and sharp edges. The fabric is nailed to the solid body with high quality and precision. The large selection of standard fabrics provide almost unlimited opportunities to create beautiful and functional wall environments. The panels are easy to install using aluminum rails screwed to the wall. Comes in three standard sizes and also available in special dimensions. LimbusWall is also available as a writing board; LimbusWall Write.

## DIMENSIONS



Other dimensions on request.

Thickness: 50 mm

Weight: 6 / 9 / 15 kg

## DESCRIPTION

Body: 40 mm polyether (Oeko-Tex) glued on 8 mm MDF board (Nordic Ecolabel).

Upholstery: Upholstered with fabric nailed on the back.

Installation: Mounting with aluminum rails screwed to the wall.



100 % recyclable materials.

## FABRIC AND PIPING

Look in Product sheet Fabric and piping.pdf for our standard fabrics, you can download it here: <http://glimakra.com/en/download/>.

## OPTIONS

Installation: Alternative mounting with panel click button connectors, e.g. when sloping walls.

# LimbusWall

Wall absorbent

Design: Team Glimakra

## CERTIFICATES

Acoustics: Measurements made in accordance with ISO 354:2003. Evaluation made according to standards for individual objects SS 25269:2013, 2015-12-26, and ISO 11654:1997. (Report 10171560.02, Date 2013-01-04, WSP Akustik)

Möbelfakta: This product has been declared and approved according to the criteria of Möbelfakta ver. 2019-05-01. Reg. number 0220160127. Validity: until 2026-01-27.



Glimakra of Sweden AB is certified according to ISO 9001:2015 and ISO 14001:2015.



## SPECIFICATION TEXT

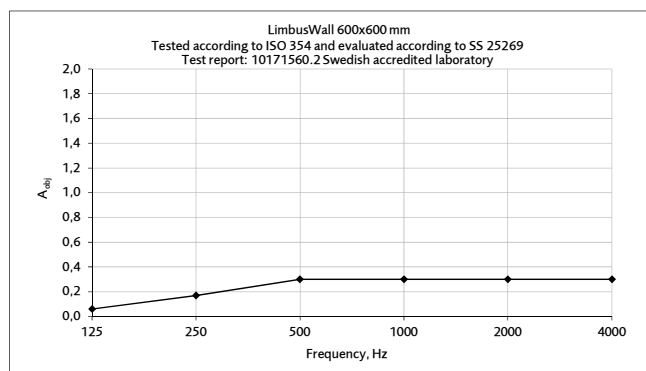
E.g: Glimakra LimbusWall 1200 x 1200 mm.

Fabric Blazer CUZ28.

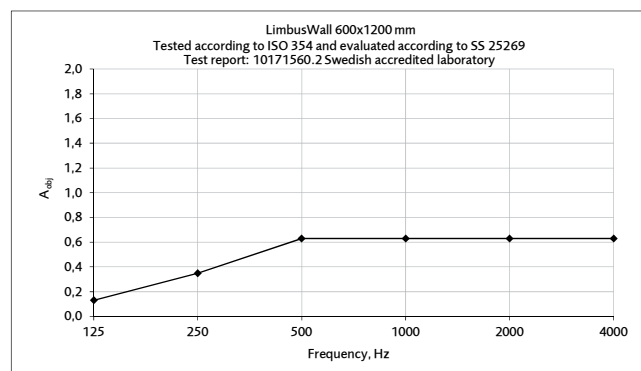
Installation with aluminum rails for easy wall mounting.

Acoustics evaluated according to SS 25269.

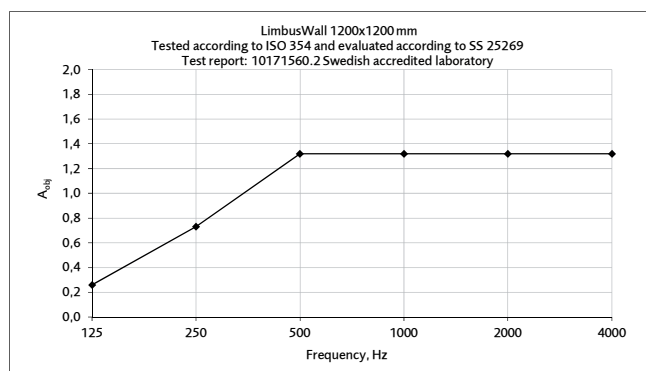
Meet the criteria of Möbelfakta.



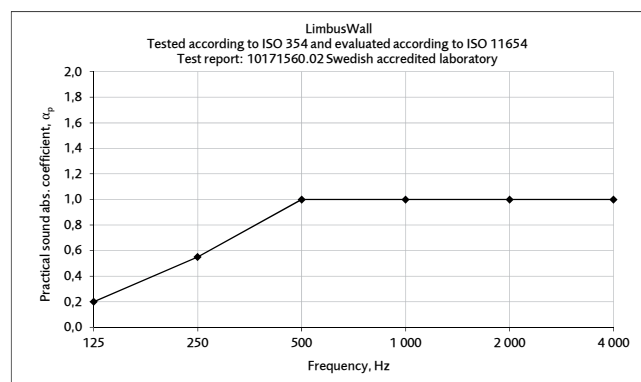
Equivalent absorption area per object (m<sup>2</sup>S/object)



Equivalent absorption area per object (m<sup>2</sup>S/object)



Equivalent absorption area per object (m<sup>2</sup>S/object)



Equivalent absorption area per m<sup>2</sup> screen surface (m<sup>2</sup>S/m<sup>2</sup>)

# LimbusWall

Wall absorbent

Design: Team Glimakra

