

PRODUCT SHEET / 2020 01 21

# JungleWall

Wall absorbent

Design: Superlab



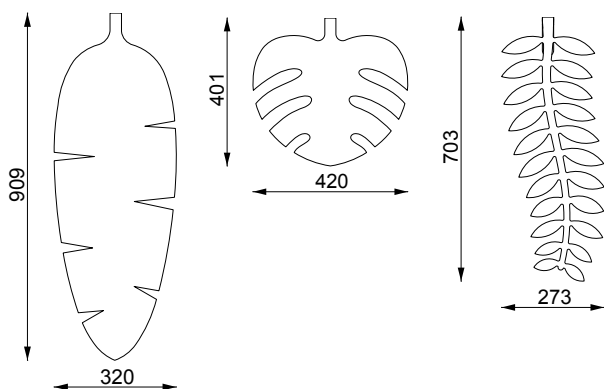
# JungleWall

Wall absorbent

Design: Superlab

JungleWall is a series of sound absorbing leaves in different patterns. The leaves are made of felt and mounted in a way that creates a distance to the wall which is a good condition for sound absorption. JungleWall is advantageously used in large quantities in a workplace or public environment as a background wall.

## DIMENSIONS



### Banana Leaf

### Monstera

### Royal Fern

3 different leaves.

Thickness: 5 mm

Weight: 800 g/m<sup>2</sup> (appr. 100 g/leaf)

100% recyclable material.

Deliveres in 6-pack/leaf.

Complete with fittings.

## OPTIONS

For suspension there are:

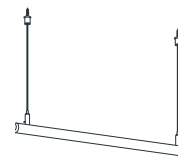
- Stained hook in solid ash.
- Black bioplastics clamp (Biodolomer®)
- Round bar in solid ash, ø 30 mm, length: 600 mm, 1200 mm, 1800 mm, 2400 mm. 2 wires c / c 600 mm with loops per round bar. Hangs with a distance of 600 mm.
- We recommend ordering more leaves for stand-alone suspension with a round rod as you can hang leaves on both sides.



Hook



Clamp



Round bar

## DESCRIPTION

Leaf: 5 mm polyester felt

Suspension: hook in solid box or clip and round rod

Installation: Blade and hook are screwed directly to the wall.

Round rod is hung with cables in the ceiling.

Mounting: Leaf and hook screwed directly onto wall. Round

rod is hung with cables in the ceiling.

## FELT

Green standard colours 446, 447, 448.

Other colours on request (see page 4).



446



447



448

Photographic fabric scans are displayed as a guide and colour variations may occur. If needed, we advise you request actual fabric samples before ordering.

# JungleWall

Wall absorbent

Design: Superlab

## CERTIFICATES

Glimakra of Sweden AB is certified according to ISO 9001:2015 and ISO 14001:2015.

Measurements made in accordance with ISO 354:2003, 2019-04-08. Evaluation made according to standard for individual objects SS 25269:2013 (Report: 19-709-M8 and 19-709-M7) and ISO 11654:1997 (Report: 19-709-M9).

$\alpha_w = 0,55$  (MH), Absorption class D

$N_{10}$ : 1,7 (10,79 m. 28 pcs assembly square)

$N_{10}$ : 9,1 (1,54 m. 4 pcs assembly square)



### Fire Reaction

- EN 13501-1+A1: B-s1, d0
- ASTM E-84-18: Class A

### Abrasion resistance

- UNE-EN 14465+A1: Class A
- ISO 12947- 2 / AC: > 50.000 rubs cycles Martindale

### Colour fastness to light

- EN ISO 105-B02: 6-7

STANDARD 100 by OEKO-TEX®

## SPECIFICATION TEXT

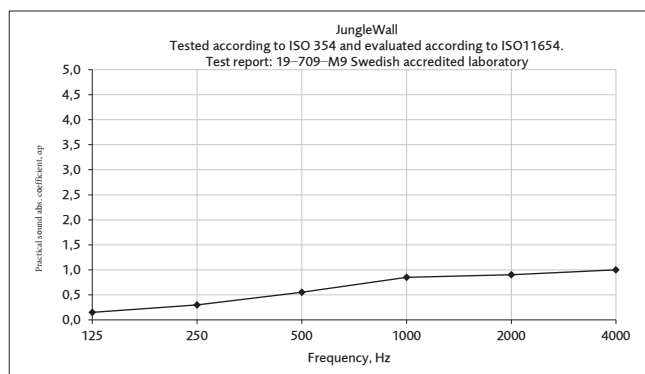
Eg: JungleWall wall absorbent in felt. Suspension with hook in solid ash.

6 pcs Banana Leaf green 448

6 pcs Monstera green 448

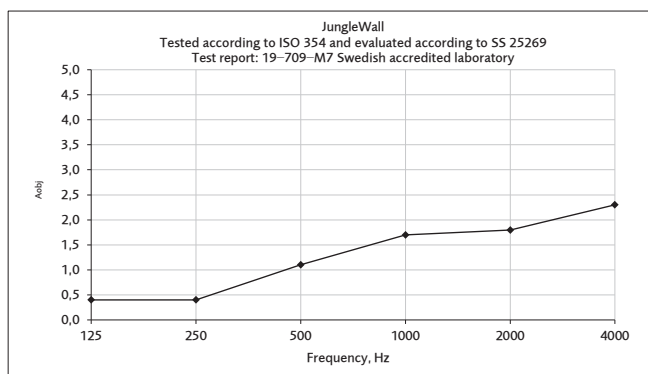
6 pcs Royal Fern green 448

### JungleWall $\alpha_w = 0,55$ (MH)



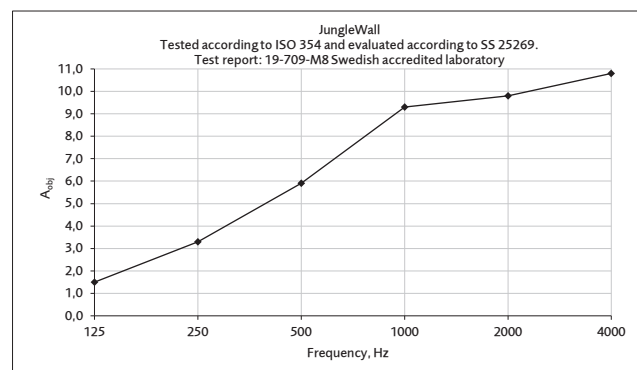
Equivalent absorption area per m² (m²S/ m²)

### JungleWall 4 squares (1,54 m²) $N_{10} = 9.1$



Equivalent absorption area per object (m²S/object)

### JungleWall 28 squares (10,79 m²) $N_{10} = 1.7$



Equivalent absorption area per object (m²S/object)

# JungleWall

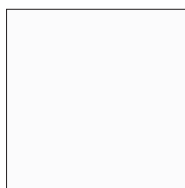
Wall absorbent

Design: Superlab

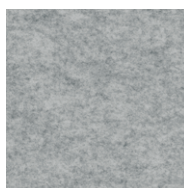
## OPTIONAL COLOURS

The felt in these colours is not available in stock, delivery time on request. Min. order quantity of 8 packages (48 leaves) / colour.

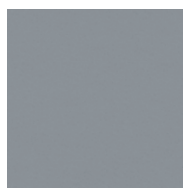
Photographic fabric scans are displayed as a guide and colour variations may occur. If needed, we advise you request actual fabric samples before ordering.



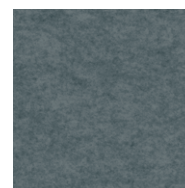
401



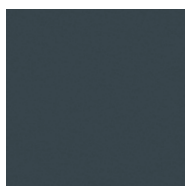
401 ML



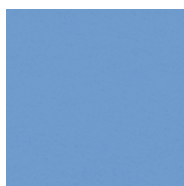
494



494 ML



499



450



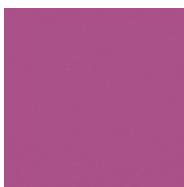
450 ML



456



446 ML



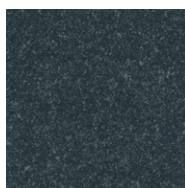
432



432 ML



424



496 ML



424 ML



423 ML



426



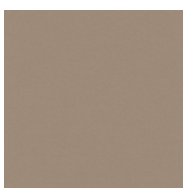
426 ML



438



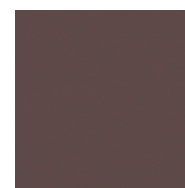
438 ML



409



409 ML



478

# JungleWall

Wall absorbent

Design: Superlab

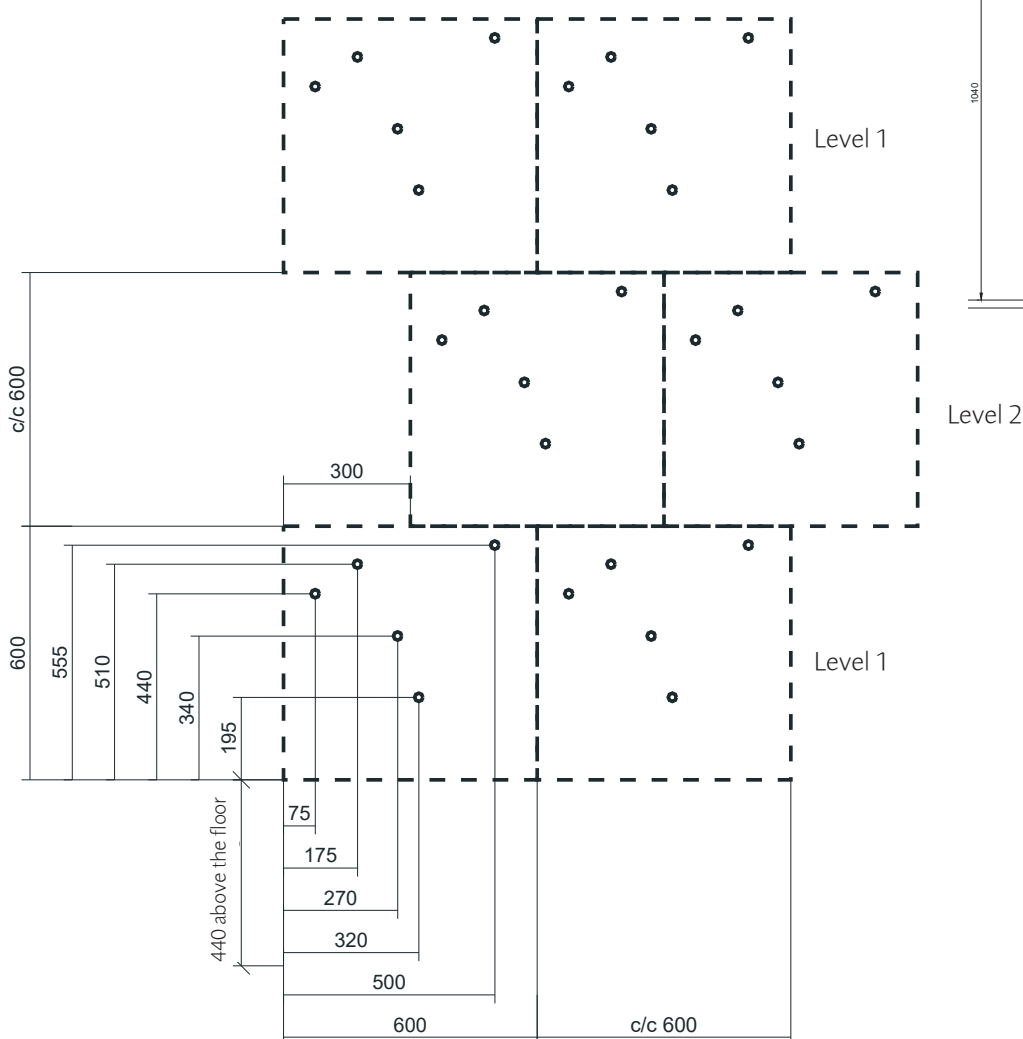
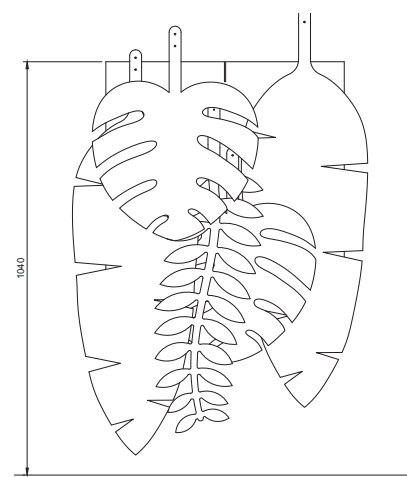
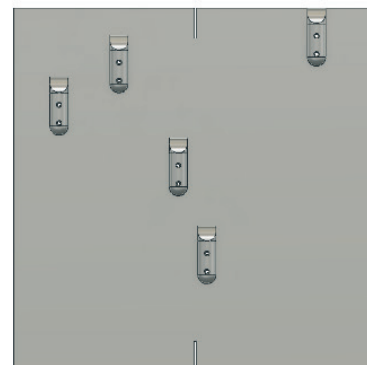
## ASSEMBLY EXAMPLE WITH HOOK

In the template there are 5 leaves per 600 x 600 mm. (~ 13,8 leaves/m<sup>2</sup>)

2 Banana leaves, 2 Monstera and 1 Royal Fern.

This is repeated sideways. When repeating upwards, the template is moved 300 mm.

1. Mounting starts down to the left 440 mm above the floor. (Level 1)
2. Mark attachment points on the wall according to the dimensioning. (Level 1)
3. The attachment points are copied with c/c 600 mm to the right. (Level 1)
4. The next height is placed c/c 600 mm and offset 300 mm to the right. (Level 2)
5. Level 3 is copied with c/c 1200 mm from level 1. (Level 3)



# JungleWall

Wall absorbent

Design: Superlab

