



Installation and activation of pCon.update



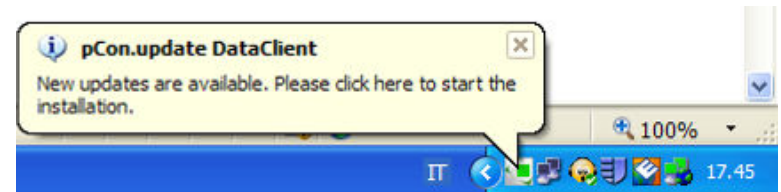
If you have problems with this process contact us at

info@kps-nordic.dk

+45 70 26 03 55

What is pCon.update

- With pCon.update you automatically get updated with new OFML data.
- When an update is available, an automatic warning shows up and you can update the data with a few simple clicks
- It's necessary to make a simple initial setting



(1) Registration

- Go to the site:
<https://update.easterngraphics.com/registration/DANM46>
- (If you don't see it in English, please change the language in the top right section and then click on **REGISTER**)



The screenshot shows the registration page for pCon UPDATE. The page has a dark header with the logo and navigation links: LOG IN, REGISTER, HELP, and CONTACT. The main content area is titled "Register on pCon.update" and includes a sidebar with links: Insert personal information, Confirm e-mail address, Activation of user account, Manage subscriptions, and Download software. The main form area is titled "Please insert your personal information." and contains various input fields: User name, Password (with a note "At least 6 characters"), Repeat password, Company, Title (with a dropdown menu showing "Mr."), First name, Last name, Street address, Zip code, City, Country (with a dropdown menu showing "Italy"), E-mail address, Phone number, and Language (with a dropdown menu showing "English"). There are also checkboxes for Profession: Manufacturer, Distributor, Architect, Designer, Agent, and Other. At the bottom, there is a checkbox for agreeing to the terms of the privacy policy and a "Next" button.

English

LOG IN REGISTER HELP CONTACT

Register on pCon.update

Insert personal information

Confirm e-mail address

Activation of user account

Manage subscriptions

Download software

Please insert your personal information.

User name

Password At least 6 characters

Repeat password

Company

Title Mr.

First name

Last name

Street address

Zip code

City

Country Italy

E-mail address

Phone number

Language English

Profession

☐ Manufacturer ☐ Designer

☐ Distributor ☐ Agent

☐ Architect ☐ Other

☐ By clicking the checkmark, you acknowledge that you have read, fully understand and agree to be bound by all terms of the [privacy policy](#).

Next

(2) Identity confirmation

- After the registration you'll **receive an email** to confirm your identity
- With a click on the **activation link** you'll be sending a request to activate the account.



Dear Mr. Easterngraphics

Thank you for your registration on pCon.update.

To continue with your registration, please confirm your e-mail address.

[Confirm e-mail address](#)

This confirmation process is necessary to make sure that the e-mail you entered is correct. If you have not activated this service, please ignore this e-mail.

Yours sincerely,
The pCon.update team

(3) Account approval

- You'll receive another email when your account has been approved.
- From this moment on you'll have access to the pCon.update portal



Dear Mr. Easterngraphics

Your pCon.update account with the user name Easterngraphics Southern Europe has been activated.

[Continue registration](#)

Yours sincerely,
The pCon.update team



(4) Access to the portal

- Insert the user name and password defined in the registration to **login to the pCon.update portal** at update.easterngraphics.com
- In the **profile** section it's possible to make changes to your profile at any time
- In the **subscription** section you can request OFML data of several manufacturers

A screenshot of the pCon.update portal's login page. The page has a grey header with 'LOG IN', 'REGISTER', and 'HELP' links. Below the header, there's a 'Welcome' section with a description of the platform. A 'Login' section contains input fields for 'User name' and 'Password', a 'Log in' button, and a 'Forgot your password?' link. A large green arrow points to the 'Log in' button. On the right side, there's a hand pointing at a green circular icon with a chair symbol. The footer features logos for various suppliers: NEWFORM OFFICE, KLAIN BÜROMÖBEL, ZARGES, W, samas OFFICE FURNITURE, Febrü Büromöbel, and lista office LO.

LOG IN REGISTER HELP

Welcome

pCon.update is the leading platform for getting configurable product data in OFML format from more than 100 manufacturers. Combine OFML data and pCon.planner for uncomplicated room planning, 3D product configuration as well as for the creation of offers and quotations

Login

User name

Password

Log in Forgot your password?

pCon.update offers graphical and commercial product data from over 100 suppliers.

NEWFORM OFFICE KLAIN BÜROMÖBEL ZARGES W samas OFFICE FURNITURE Febrü Büromöbel lista office LO

(5) Data request

- Go to the **Manufacturers** section
- **Select the manufacturers** for which you're interested in using configurable data and click on **Subscribe**

The screenshot shows a web application interface for managing subscriptions to manufacturers. At the top, there is a navigation bar with links for MANUFACTURERS, ACCOUNT, SUPPORT, and a LOG OUT button. Below the navigation bar, a section titled "Your subscriptions" provides information about downloading and updating data using the pCon.update DataClient. It includes a checkbox for receiving email notifications when new manufacturers are available. To the right of this text is an image of a stack of papers. Below the subscription information, there is a grid of manufacturer cards. Each card displays the manufacturer's logo, name, and a "Subscribe" button. The manufacturers listed are: ECHO (Echo Büromöbel), GÖTESSONS (Göteßons), mey (Mey Chair Systems), Diemme (Diemme), eurosit (Eurosit), kerkmann (Theo Kerkmann Büromöbelfabrik), LUCTRA (DURABLE Hunke & Jochheim), REISS (REISS Büromöbel), galneospace (galneospace - wende interaktiv), Westaro (Westaro), ofita (Ofita), dataflex (Dataflex International), MAGIS (MAGIS), mauser (Mauser Einrichtungssysteme), Allermuir (Allermuir), senator (Senator), DILINSKI (Dilinski Objekteneinrichtungen), and DESKIN (DESKIN INTERNATIONAL). The grid also includes sorting and filtering options at the top.

MANUFACTURERS ACCOUNT SUPPORT LOG OUT

Your subscriptions

The content of the subscribed manufacturers can be downloaded and updated using [pCon.update DataClient](#).

☒ Please keep me informed via e-mail when new manufacturers are available.

Sorting: Newest first Filter Search

ECHO Echo Büromöbel Subscribe	GÖTESSONS Göteßons Subscribe	mey Mey Chair Systems Subscribe	Diemme Diemme Subscribe	eurosit Eurosit Subscribe	kerkmann Theo Kerkmann Büromöbelfabrik Subscribe
LUCTRA DURABLE Hunke & Jochheim Subscribe	REISS REISS Büromöbel Subscribe	galneospace galneospace - wende interaktiv Subscribe	Westaro Westaro Subscribe	ofita Ofita Subscribe	dataflex Dataflex International Subscribe
MAGIS MAGIS Subscribe	mauser Mauser Einrichtungssysteme Subscribe	Allermuir Allermuir Subscribe	senator Senator Subscribe	DILINSKI Dilinski Objekteneinrichtungen Subscribe	DESKIN INTERNATIONAL DESKIN Subscribe

(6) Notification for data access

- You'll **receive an email** when the manufacturer has **approved** your access to their data
- The data approval is done by the manufacturer



Dear Mr. Easterngraphics

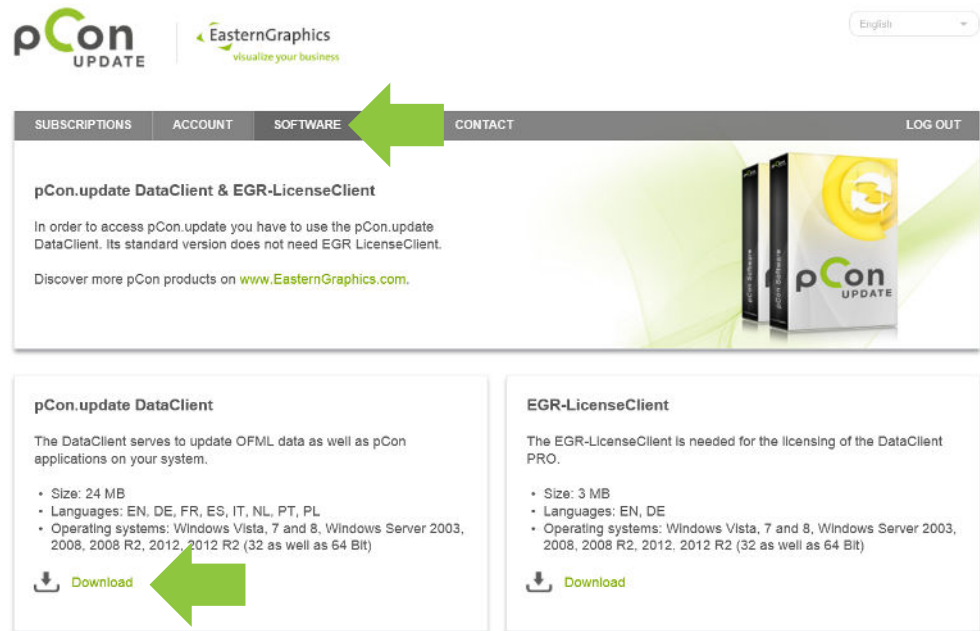
✓ Your subscription to **Glimakra of Sweden** has been activated.

You can now use the pCon.update DataClient to download the content provided by EasternGraphics s.r.l..

Yours sincerely,
The pCon.update team

(7) Download and install

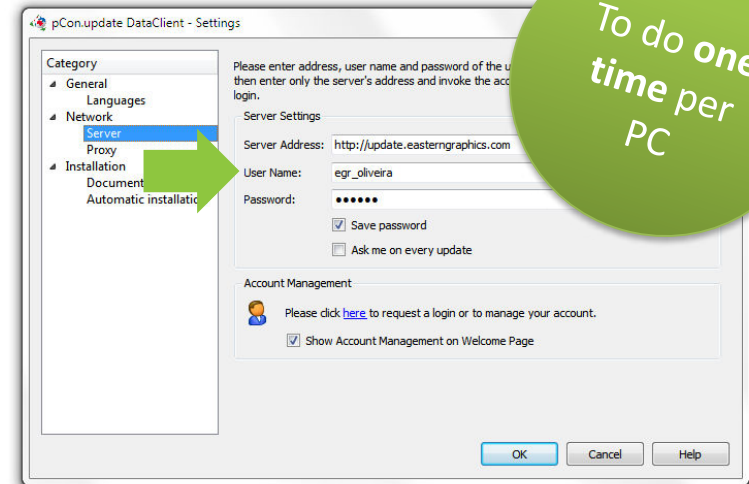
- It's necessary to install **pCon.update DataClient** to be able to download pCon.planner ME and the requested configurable data
- To download pCon.update DataClient you should login to the pCon.update portal and in the **Software** section click on 'Download' for the pCon.update DataClient



(8) pCon.update DataClient [Initial setup]

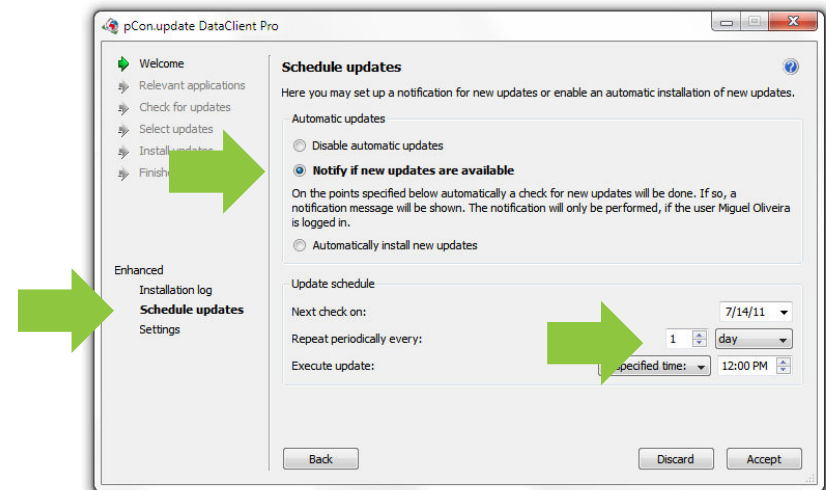
Access

- Server Address: <https://update.easterngraphics.com>
- User Name: the one used during registration
- Password: the one used during registration



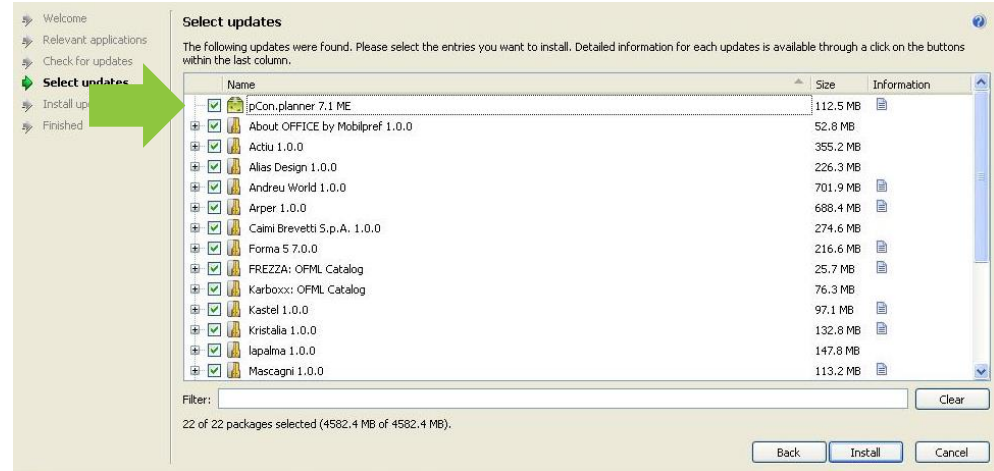
Schedule Updates

- Select the option 'Notify if new updates are available' and set the 'Repeat periodically every' to 'daily'
- When new updates are available a notification will be visible.



(9) pCon.planner ME

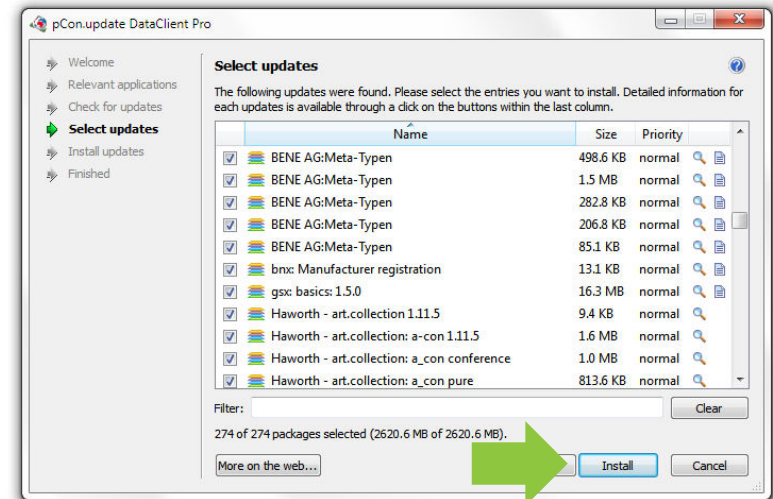
- It's necessary to have installed pCon.planner ME or PRO to process configurable data
- pCon.planner ME will show up in the window of the available updates



(10) pCon.update DataClient [Updates]

Select updates

- Update all the data listed by simply clicking on the 'Install' button



Install updates

- The process downloads the data, checks their validity and installs it.
- After the process is completed you can open any pCon module and re-start your work

